

Cabinetmaker

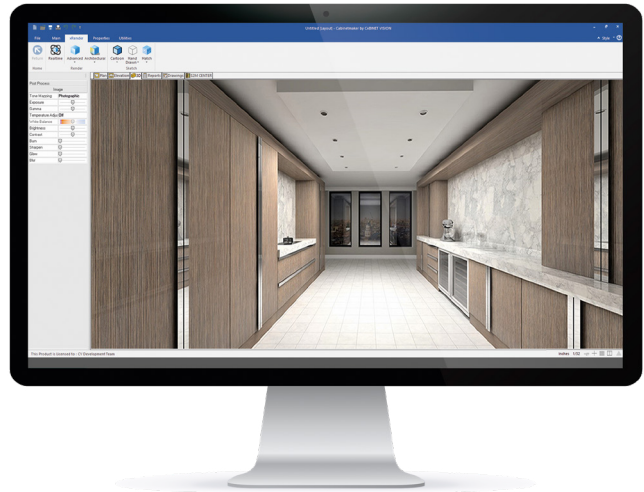
Front end design

Cabinetmaker by CABINET VISION was designed with the small startup cabinet shop in mind. It gives you the essential tools you need to get started in the automation of your engineering process. Cabinetmaker provides basic cut-list, estimating, and presentation capability.

Cabinetmaker is an entry level design and manufacturing software tool that allows you to detail basic Kitchen Cabinet and Commercial Cabinet jobs. Cabinetmaker allows you to generate your shop drawings, 3D renderings, material requirements, part lists and basic estimating data. Graphically lay out your job to quickly create your shop drawings or use the built in Order Entry function to get a quick estimate. Easy to navigate ribbon bars make locating items effortless.

Cabinetmaker by CABINET VISION includes:

- Drawing capabilities
- 3D rendering
- Cutlists and reports
- Pricing and bidding



Key Features

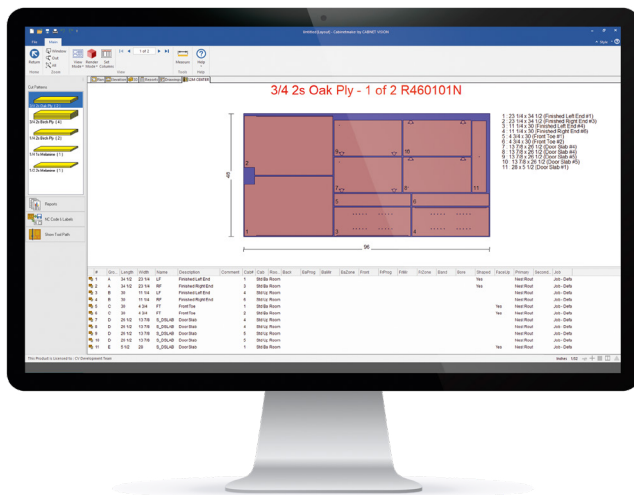
- Full cabinet sectioning control
- Basic CAD functionality
- Multiple design views available (plan, elevation, 3D, rendered, etc.)
- Straight, angled, and peninsula walls
- User defined custom assembly catalogs
- Photo-realistic renderings (see reverse)
- Face frame construction definition
- Frameless construction definition
- Drawer box and roll out construction definition
- Door/drawer front style definition
- Switch from inches or metric at anytime during the design process
- Scroll wheel zooming

CNC capabilities

Cabinetmaker by CABINET VISION is the ideal launch platform for the small shop getting started with CNC.

Cabinetmaker allows you to take your designs and send them straight to your CNC machinery with the push of a button. Available in either a Nested Base or a Work Cell configuration (Panel Saw and Point-to-Point), Cabinetmaker is the perfect starting point to move your business into the process of manufacturing automation.

Cabinetmaker can automatically process your part geometries and produce machine ready G-Code to send straight to your machinery, eliminating time and costly errors. Get started on the path to success.



Key Features

- Pure G-Code tailored for your machine
- Import DXF's
- Integrated label reports
- Integrated reporting
- Check sheet sizes to fit machine
- Pattern diagram print outs
- Automatic tooling and toolpath generation
- Pocketing of rectangles and circles
- Basic toolpath simulation
- Ability to control lead-in/out offsets
- Linked part outline (bridge) nesting
- Intelligent small part handling (tabs, onionskins, return onionskins)
- Combine operations on Part Edge with Part Outline

Hexagon is a global leader in sensor, software and autonomous solutions. We are putting data to work to boost efficiency, productivity, and quality across industrial, manufacturing, infrastructure, safety, and mobility applications.

Our technologies are shaping urban and production ecosystems to become increasingly connected and autonomous – ensuring a scalable, sustainable future.

Hexagon's Manufacturing Intelligence division provides solutions that utilise data from design and engineering, production and metrology to make manufacturing smarter. For more information, visit hexagonmi.com.

Learn more about Hexagon (Nasdaq Stockholm: HEXA B) at hexagon.com and follow us [@HexagonAB](https://twitter.com/HexagonAB).

Planit Canada

T: 888-824-1474

E: info@planitcanada.ca

W: planitcanada.ca